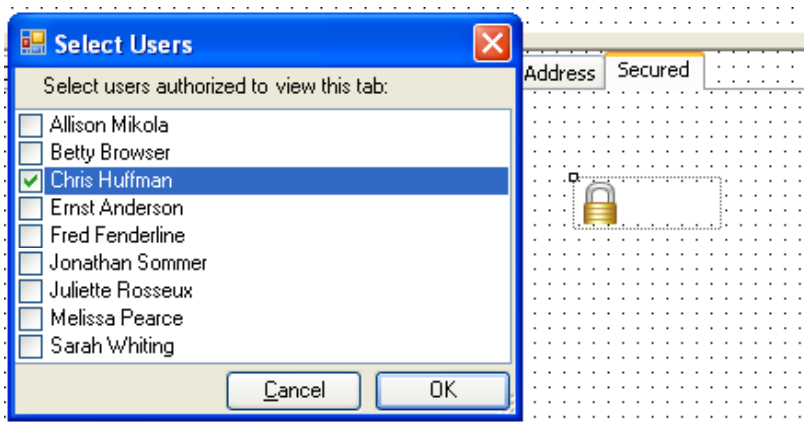


## Act.SecuredTab Custom Control

### Overview

The "Act.SecuredTab Custom Control" is an ACT! custom control that you can drop on your layout custom tab to secure a tab to particular individuals.

For example, if you have secured fields (fields that are limited to particular individuals), you can place them in a tab in the layout, and secure the whole tab such that is only visible to users of your choosing with this custom control.



### Key Features

- Secure tabs in layouts by users
- Source code included

## Act.SecuredTab Installation and Configuration

To install and the "Act.SecuredTab Custom Control" please follow the steps below:

Step 1: Copy Act.Secured.Tab.dll into the Tools folder located in the ACT! installation directory

Step 2: Run ACT!, and navigate to the layout designer (Tools->Design Layout->Contact)

Step 3: In the layout designer, right click in the toolbox (left pane in the designer), and select 'Customize..'

Step 4: Select SecuredTab in the Customize Toolbox dialog and select OK.

Step 5: The SecuredTab control will show up under the Custom category in the Toolbox:



Drag the SecuredTab control from the Toolbox onto a Tab to secure that tab.

Step 6: Double click the lock icon, to open the Select Users dialog, and select which users should be allowed to access this tab.

Step 7: Save the layout.

NOTE: Act.SecuredTab control must be installed on any machine with ACT! that will load a layout with a secured tab to successfully secure the tab.

## License

Copyright (c) 2009, Sage Software SB, Inc.  
All rights reserved.

Sage Software does not charge for use of the Software licensed herein. Charges for any other software or services will be set forth in a separate written agreement between the parties.

You acknowledge and agree to the following: (i) Sage Software provides the Software free of charge and without any obligation of technical support or maintenance; (ii) Sage Software does not guarantee the accuracy, completeness, and reliability of the Software; (iii) Sage Software makes no representation about whether the Software has been tested (either internally or via beta test) for quality assurance or quality control, (iv) you may experience bugs, errors and difficulty in use, and (v) you shall have sole responsibility for protection and preservation of your data and files.

Redistribution and use in source and binary forms, with or without modification, are permitted provided that the following conditions are met:

Redistributions of source code must retain the above copyright notice, this list of conditions and the following disclaimer.

Redistributions in binary form must reproduce the above copyright notice, this list of conditions and the following disclaimer in the documentation and/or other materials provided with the distribution.

Neither the names of ACT!, Sage Software, Sage Group plc, nor the names of its contributors may be used to endorse or promote products derived from this software without specific prior written permission.

THE SOFTWARE IS ACCEPTED BY YOU "AS IS" AND "WITH ALL FAULTS" ALL WARRANTIES CONCERNING THE SOFTWARE, EXPRESS OR IMPLIED, STATUTORY, OR IN ANY OTHER PROVISION OF THIS AGREEMENT INCLUDING, WITHOUT LIMITATION, ANY WARRANTY OF TITLE, NON-INFRINGEMENT, MERCHANTABILITY, OR FITNESS FOR A PARTICULAR PURPOSE, ARE HEREBY EXPRESSLY DISCLAIMED AND EXCLUDED.

WHETHER OR NOT ADVISED OF THE POSSIBILITY OF SUCH DAMAGES, SAGE SOFTWARE SHALL NOT UNDER ANY CIRCUMSTANCE BE LIABLE TO YOU OR ANY OTHER PARTY FOR ANY SPECIAL, INDIRECT, INCIDENTAL, PUNITIVE OR CONSEQUENTIAL DAMAGES OF ANY KIND, INCLUDING WITHOUT LIMITATION DAMAGES FOR LOSS OF GOODWILL, LOST PROFITS, LOST DATA, WORK STOPPAGE OR COMPUTER HARDWARE OR SOFTWARE DAMAGE, FAILURE OR MALFUNCTION, EVEN IF SAGE SOFTWARE HAS BEEN ADVISED OF THE POSSIBILITY OF SUCH DAMAGES AND NOTWITHSTANDING THE FAILURE OF ESSENTIAL PURPOSE OF ANY LIMITED REMEDY.

You acknowledge that Sage Software shall retain and is not transferring to you any title to or ownership rights in or to any intellectual property in the Software, or copies thereof.

Sage Software may terminate this Agreement, in its sole discretion, upon written notice to you, which notice shall be effective upon receipt. Upon termination of this Agreement, you shall comply with any request by Sage Software for you to return to Sage Software, or destroy, all originals and copies of all Software (including any support materials furnished by Sage Software), permanently purge all machine-readable copies of the Software from all computers and storage devices, and to certify to Sage Software in writing that the foregoing duties have been performed and that you will not in any way use or permit the use of the Software.

This Agreement shall be governed by the laws of the State of Georgia.

## About ACT!

The #1 selling contact and customer manager for 20 years, ACT! by Sage enables individuals and teams involved in selling or other contact-driven roles to improve productivity by helping them organize contact information, manage daily responsibilities, and communicate more effectively. With contact details at their fingertips, they can focus on what's important to their business - building stronger customer relationships. ACT! is easy to learn and use, customizable, and affordable for small businesses. With more than 2.7 million individual users and 38,000 corporate accounts in 25 countries, ACT! continues to lead the industry in helping customers connect and succeed.

sage CRM Solutions

**ACT!**  
by Sage

Developer Network

Sage Software supports the needs, challenges, and dreams of 2.7 million small and mid-sized business customers in North America through easy-to-use, scalable and customizable software and services. Sage Software is a subsidiary of The Sage Group plc, a leading international supplier of business management software and services formed in 1981 and listed on the London Stock Exchange since 1989.

sage  
software

Your business in mind.